

Caltech

ELECTRICAL ENGINEERING

Electrical Engineering at Caltech is one of the top departments in the country, with an extended record of excellence and innovation. Established in 1910, many distinguished leaders in the field over the last century received their training at Caltech. Our pioneering research has led to major technological innovations, spawned other disciplines, and developed vitally important collaborations.

AREAS OF RESEARCH:

BIO-ELECTRONICS AND BIO-OPTICS • CIRCUITS AND VLSI • CONTROL • DEVICES • ELECTROMAGNETICS, OPTICAL DEVICES, AND PHOTONICS • ENERGY • INFORMATION AND DATA SCIENCE INFORMATION THEORY • LEARNING, PATTERN RECOGNITION, AND NEURAL NETWORKS • MEMS AND MICROMACHINING • NETWORKS AND WIRELESS COMMUNICATION • OPTIMIZATION QUANTUM INFORMATION SCIENCE • RF, MICROWAVE CIRCUITS, AND ANTENNAS • ROBOTICS • SIGNAL PROCESSING • VISION

EARN YOUR PHD IN ELECTRICAL ENGINEERING AT CALTECH

90 GRADUATE STUDENTS, 21 FACULTY MEMBERS

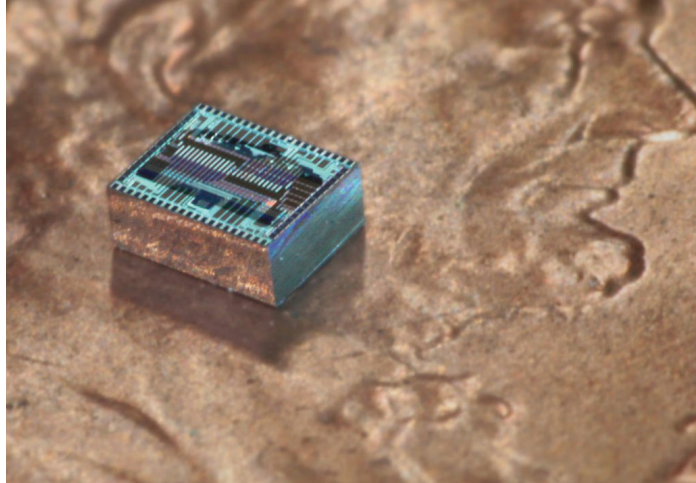
OUR FOCUS

Electrical Engineering at Caltech emphasizes the fundamentals while acknowledging the multi-disciplinary nature of the field. Closely allied with Applied Physics, Medical Engineering, Computer Science, and Control and Dynamical Systems, it offers students the opportunity for study and research, both theoretical and experimental, in a wide variety of subjects. Students benefit from access to world-class faculty and substantial experimental laboratory facilities.

APPLICATIONS DUE DECEMBER 15, 2020

Apply online at www.applyweb.com/caltgapp

All qualified applications will be considered. Women and members of minority groups are especially encouraged to apply. Financial assistance for application fees is available for those who qualify.



Caltech

www.ee.caltech.edu

CONTACT:

Tanya Owen

Option Manager

tanya@caltech.edu

626-395-8817

ADMISSIONS INFORMATION

www.gradoffice.caltech.edu